

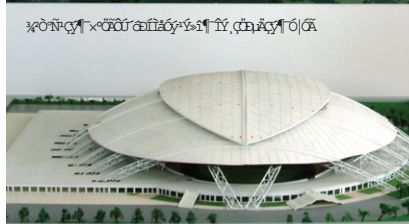
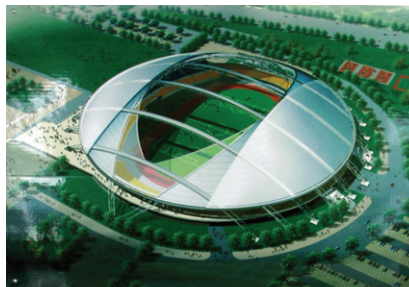
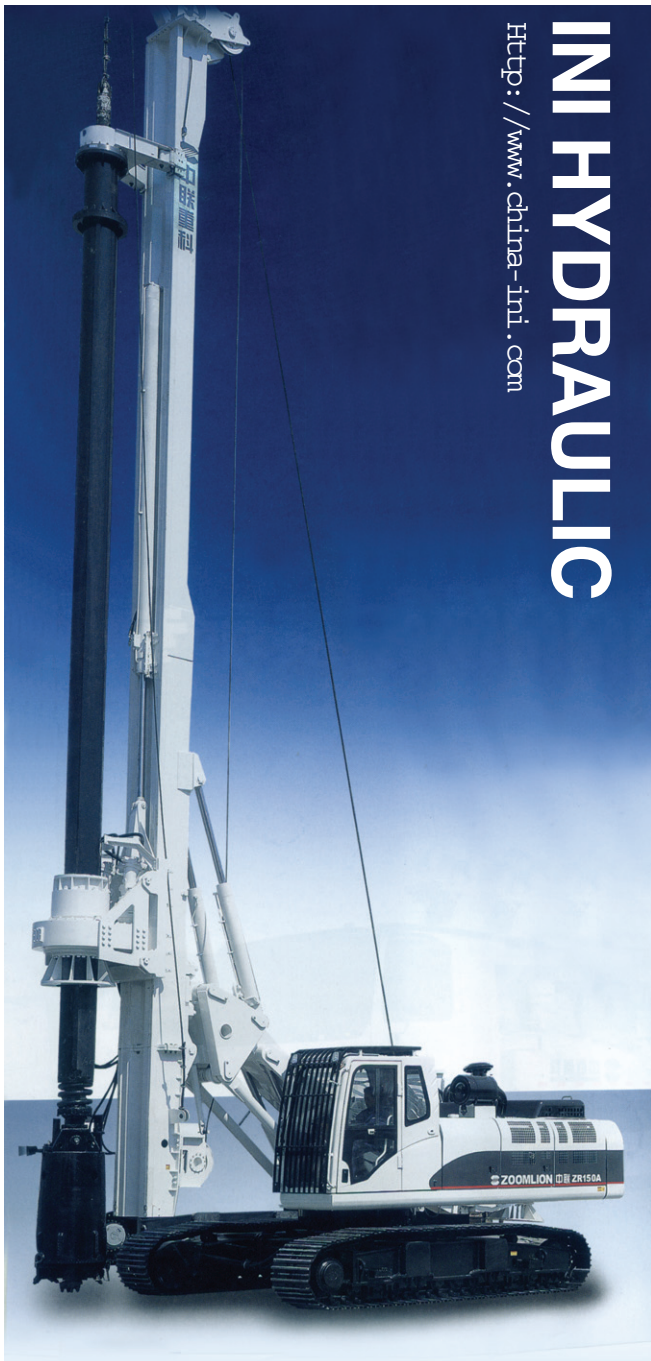
***ini***<sup>®</sup> NINGBO DAGANG INI  
HYDRAULIC CO.,LTD.



>>> [Http: //www.china-ini.com](http://www.china-ini.com)

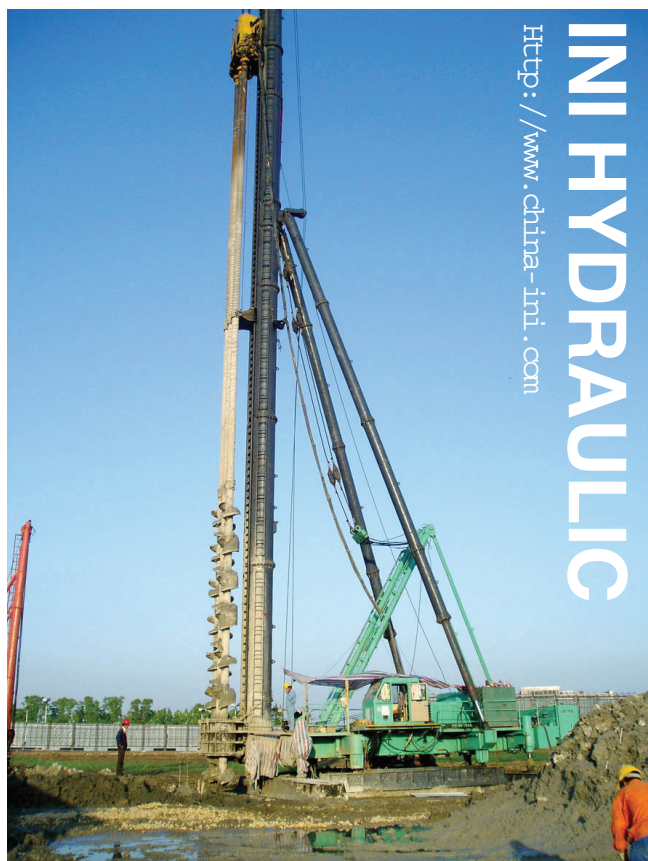
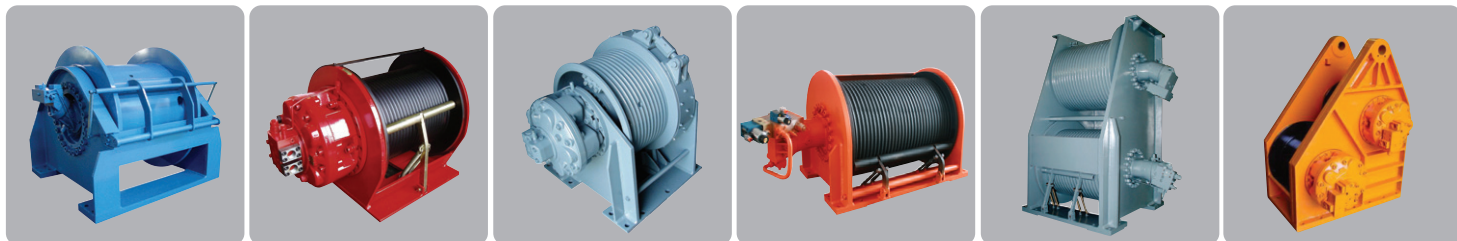
**2010** Catalogue

# Product Shows & Applications

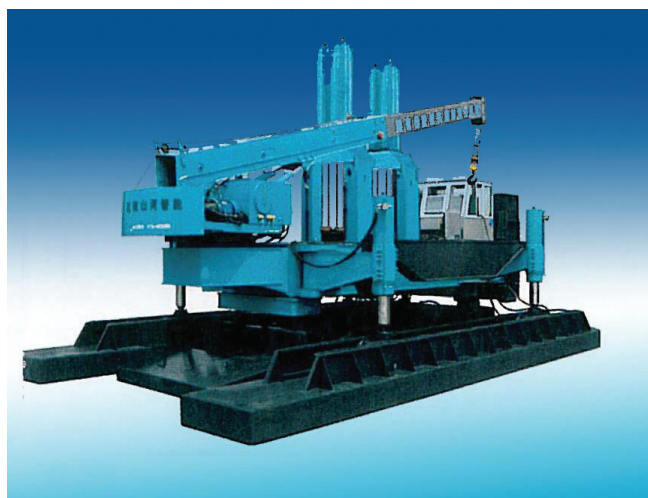




# Product Shows & Applications



INI HYDRAULIC  
[Http://www.china-ini.com](http://www.china-ini.com)







# Brief Introduction



NINGBO DAGANG INI HYDRAULIC CO., LTD is situated in a state-level economic and technological development zone of BEILUN district, NINGBO. The factory covers almost 40,000 m<sup>2</sup>, with 38,000 m<sup>2</sup> building area. The registered capital is 6,500,000 USD, and the total investment is 15,000,000 USD. Currently, the company is staffed with 400 employees, 20% among whom are professional technicians. The company has a strong R&D team, led by the general manager—a professorate senior engineer, who takes special allowance from State Council. The team also includes one doctor, two masters, senior engineers, engineers and engineer trainees, and two retired German experts from ZF GROUP as honor employees. They will come to the factory to help and give advices once a year. Up to now, the company owns eight invention patents and thirty practical innovation and figure patents. Several other patents are under reviewing. The company is specialized in manufacturing of electro-hydraulic proportional valves, hydraulic motors, hydrostatic drives, hydraulic winches, planetary gearboxes, high accuracy rotary flow dividers and the whole set of hydraulic system. These patent products are widely used in engineering machinery, petroleum, mining industry, geological exploration, ships, metallurgy, light industry, agriculture, landscape, environment and military industry. Now we are stepping into the international market, and our products are being exported to Southeast Asia, Middle East, Germany, USA, Netherlands, Turkey, India, Russia, Korea and other countries and regions around the world.

The company has more than 150 advanced manufacturing equipment, half of which were imported. 60% of all the machines are CNC, including three-dimension coordinate measuring machine, universal gear measuring machine, digital ultrasonic inspection machine, and universal tool microscope. A static hydrostatic drives lab and 12 factory test stands were established for product testing. The company passed ISO 9001 quality system certification, CCS certification and CE certification. The annual sales volume reaches 250 million RMB, with a production capacity of over 300 million RMB. The company was appraised as a state-level high-tech enterprise and is a patent pioneer enterprise.

## IGY××L Hydrostatic Drive Series (Wheel Motor)

### 1. Brief Introduction

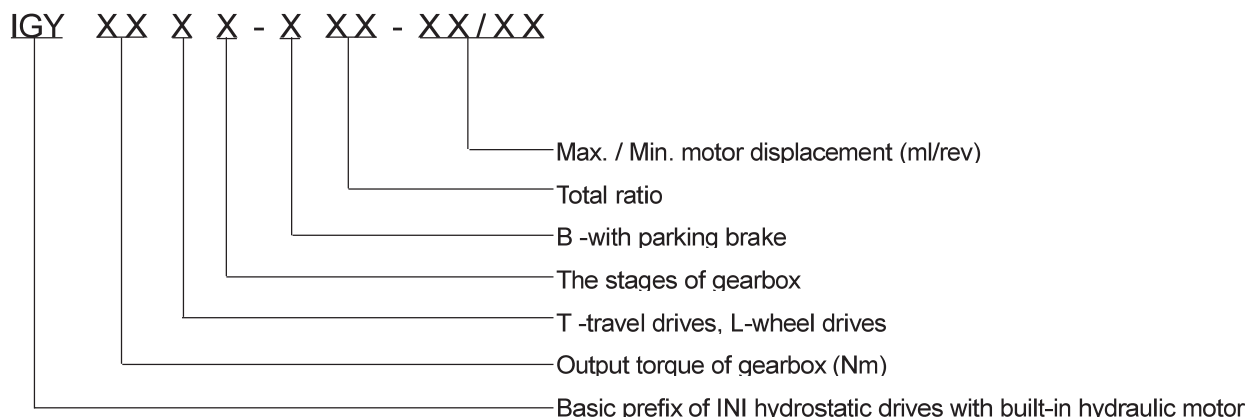
The IGY××L hydrostatic drive series adopt our patented technology and advanced manufacture method. The series consist of built-in variable displacement piston motor, multi-disc brake, planetary gearbox, and functional valve block. The drives feature high working efficiency, great reliability, compact design, high working pressure and Hi-low speed switch control. Due to high load capacity bearing and bolts, the drives can be directly installed in the wheel of mobile vehicles.

The Dimensions and technical performance of the drives conform to the Fairfield type. The drives can also be used for replacement in closed loop system or open loop system.

The drives described in this catalog are of the standard type. Other design variants with different ratio, dimensions, power characteristics and different hydraulic motor are available if so requested for specific applications.

The drives have been widely applied in aerial platform, road roller, wheeled excavator, track vehicles, and other wheeled mobile equipment. The drives not only have been used by domestic famous aerial platform and road roller company, but also have been exported to Russia, Spain and so on.

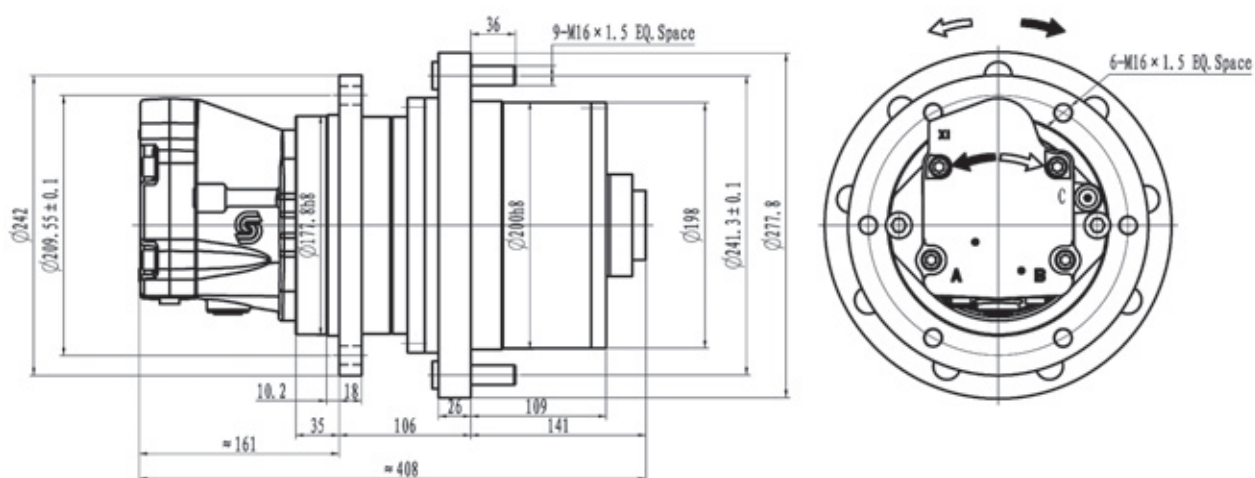
### 2. Model Options



### 3. Options Example

IGY3400L2-B47-21/10 represents that the drive has output torque of 3400Nm, two stages planetary gearbox for wheel drives with a total ratio of 47, fitted with a multi-disc parking brake, and high speed axial hydraulic motor. The hydraulic motor has a variable displacement (two speed) of 21ml/rev in low speed position and 10ml/rev in high speed position.

## Dimensions

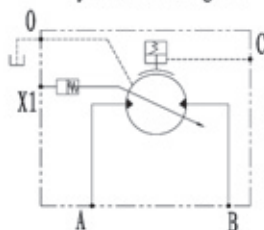


## Specification

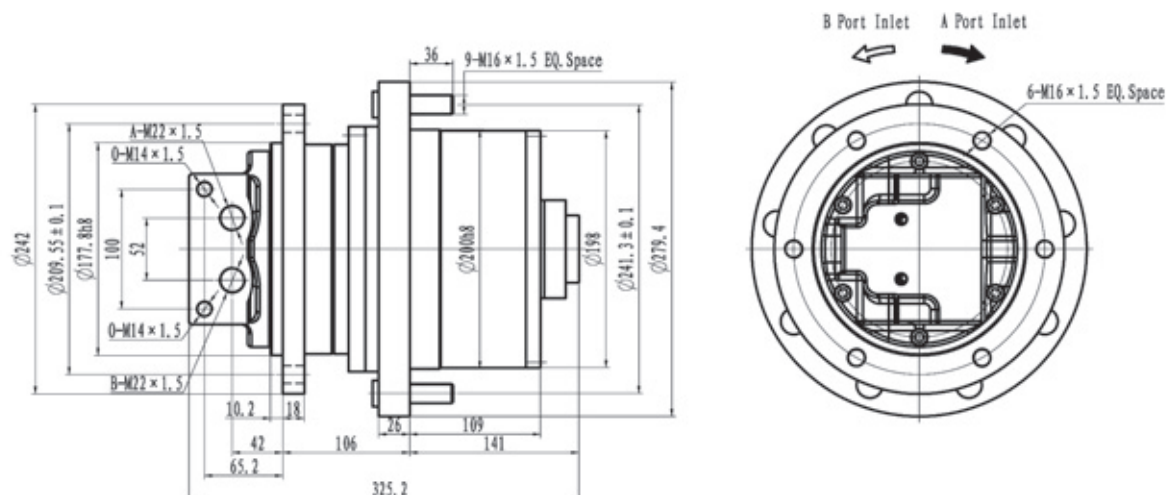
Output Torque (N · m)		Ratio	Brake			Hydraulic Motor		
Continuous	Max.		Static Torque (N · m)	Initial Release (MPa)	Full Release (MPa)	Model	Max. Pressure (MPa)	Max. Speed (rpm)
1690	3381	47	151	1.0	1.6	Sauer - Danfoss KC/LC Series	35	3500
		25.775	151					

- The product can be used in closed loop system.
- The product is equipped with a mechanical disconnecting device for being towed without damaging if necessary.

Hydraulic Diagram



## Dimensions

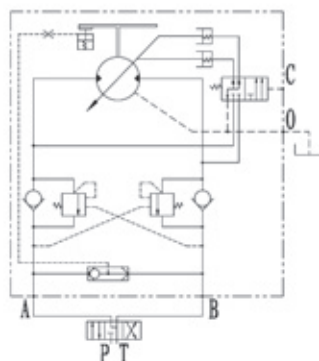


## Specification

Output Torque (N · m)		Ratio	Brake			Hydraulic Motor			
Continuous	Max.		Static Torque (N · m)	Initial Release (MPa)	Full Release (MPa)	Large Displacement (ml/rev)	Small Displacement (ml/rev)	Max. Pressure (MPa)	Max. Speed (rpm)
1690	3381	47	151	1.0	1.6	21	10	28	3000
		25.775	151						

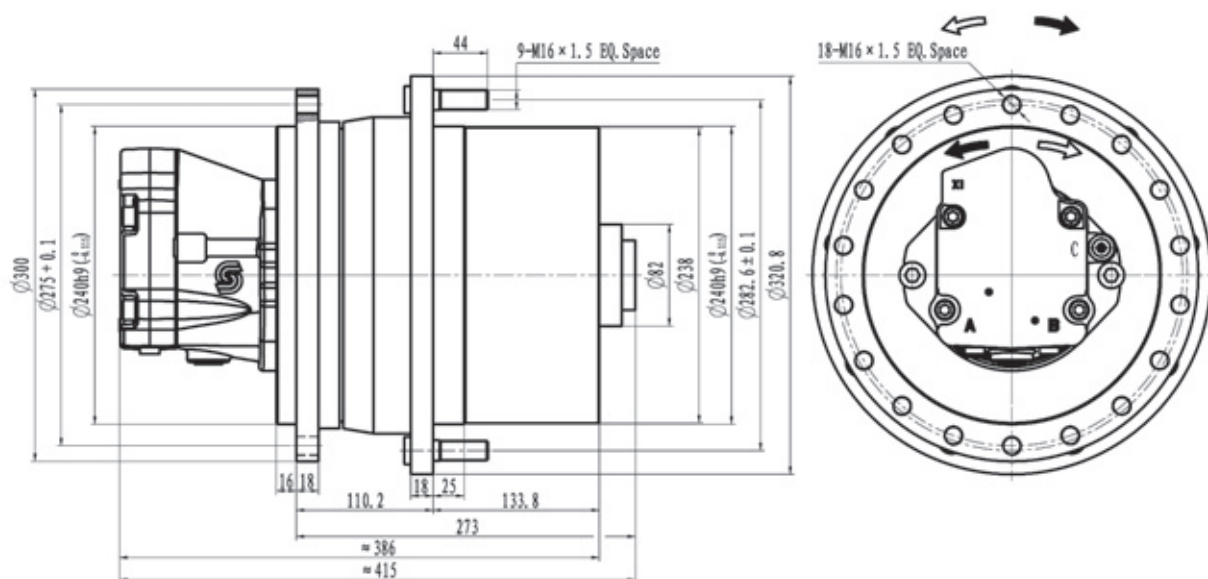
- The product can be fitted with KC/LC series plug-in hydraulic motor from Sauer-Danfoss.
- The product can be used in closed loop system.
- The product is equipped with a mechanical disconnecting device for being towed without damaging if necessary.

Hydraulic Diagram



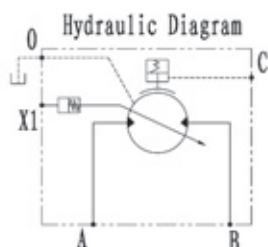


## Dimensions



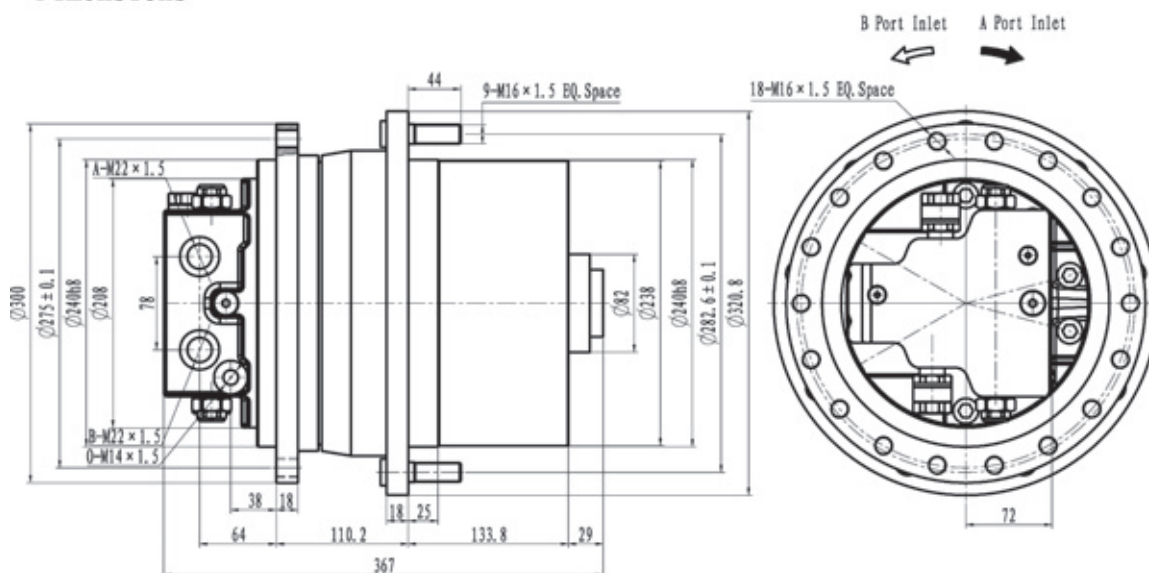
## Specification

Output Torque (N · m)		Ratio	Brake			Hydraulic Motor		
Continuous	Max.		Static Torque (N · m)	Initial Release (MPa)	Full Release (MPa)	Model	Max. Pressure (MPa)	Max. Speed (r/min)
5500	11000	46.435	230	1.2	1.8	Sauer-Danfoss KC/LC Series	35	3500
		42.123	260					
1. The product can be used in closed loop system.								
2. The product is equipped with a mechanical disconnecting device for being towed without damaging if necessary.								





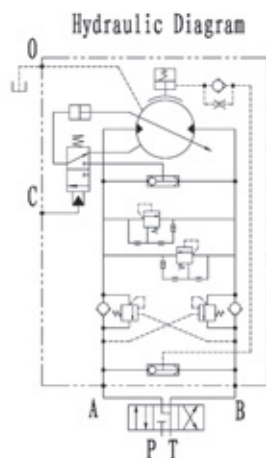
## Dimensions



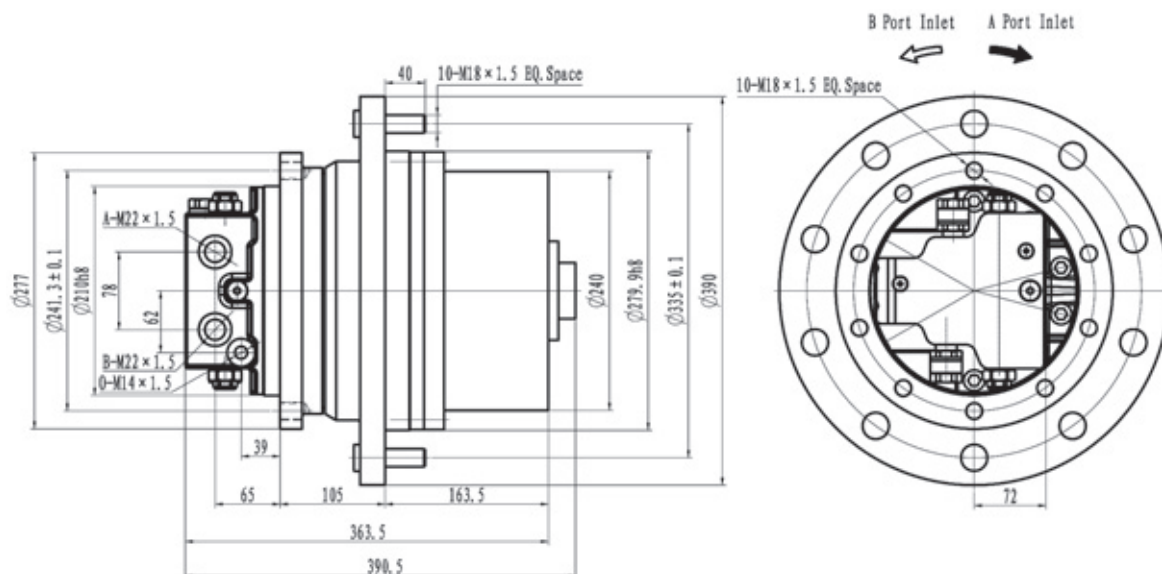
## Specification

Output Torque (N · m)		Ratio	Brake			Hydraulic Motor			
Continuous	Max.		Static Torque (N · m)	Initial Release (MPa)	Full Release (MPa)	Large Displacement (ml/rev)	Small Displacement (ml/rev)	Max. Pressure (MPa)	Max. Speed (rpm)
5500	11000	46.435	230	1.2	1.8	53	12	28	3000
		42.123	260						

1. The product can be fitted with KC/LC series plug-in hydraulic motor from Sauer-Danfoss.
2. The product can be used in closed loop system.
3. The product is equipped with a mechanical disconnecting device for being towed without damaging if necessary.



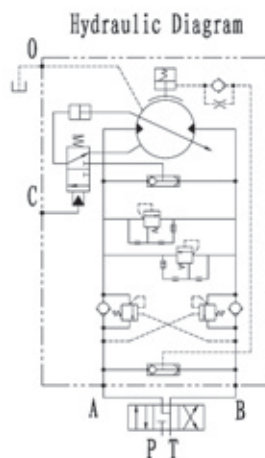
## Dimensions



## Specification

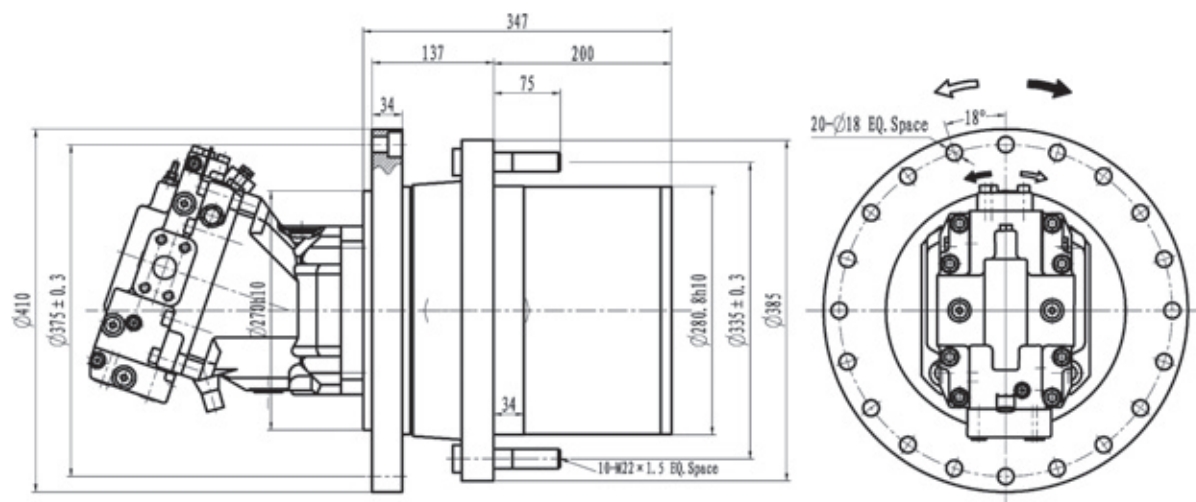
Output Torque (N · m)		Ratio	Brake			Hydraulic Motor			
Continuous	Max.		Static Torque (N · m)	Initial Release (MPa)	Full Release (MPa)	Large Displacement (ml/rev)	Small Displacement (ml/rev)	Max. Pressure (MPa)	Max. Speed (rpm)
9000	18000	80	230	1.2	1.8	53	12	28	3000
		77.449	230						
		69.857	260						

- The product can be fitted with KC/LC series plug-in hydraulic motor from Sauer-Danfoss.
- The product can be used in closed loop system.
- The product is equipped with a mechanical disconnecting device for being towed without damaging if necessary.





## Dimensions



## Specifications

Output Torque (N · m)		Ratio	Brake			Hydraulic Motor		
Continuous	Max.		Static Torque (N · m)	Initial Release (MPa)	Full Release (MPa)	Model	Max. Pressure (MPa)	Max. Speed (r/min)
14000	28000	47.36	440	1.0	1.6	Sauer - danfoss 51 Series	35	3500

